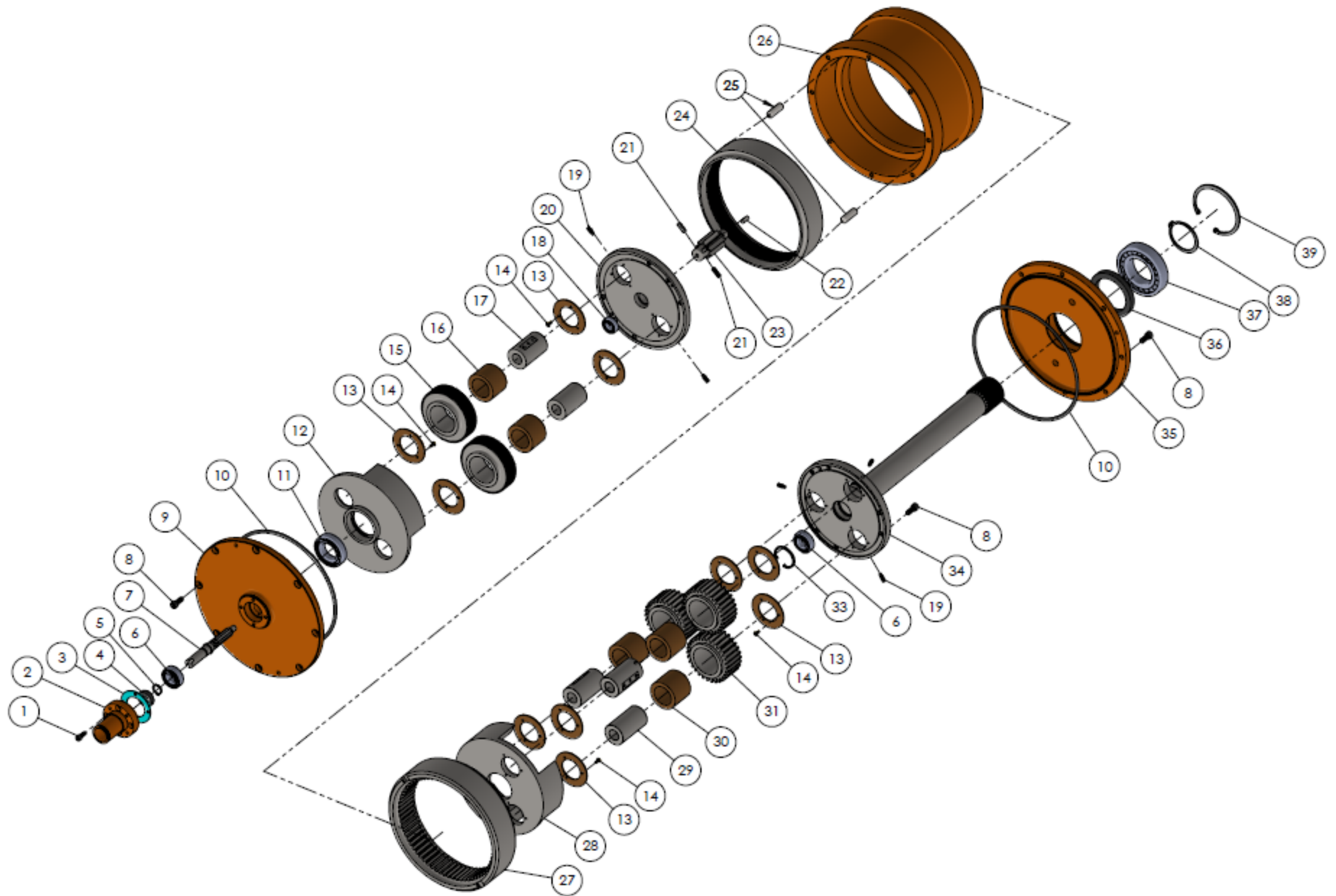


# Rev Tech LC - Aftermarket Parts for 2.5 Gearbox



Item#	Part #	Description	Qty
1	140200	SHCS 1/4" - 20 x 5/8"	4
2-A	140100	Seal Retainer (for Torque Control)	1
2-B	140101	Seal Retainer (for GS Coupling)	1
3	140300	Gasket	1
4	140400	Oil Seal	1
5	142200	Snap Ring 3100-68	1
6	140500	Bearing 6203	2
7-A	142300	1st Stage Pinion (for Torque Control)	1
7-B	142301	1st Stage Pinion (for GS Coupling)	1
8	140700	SHCS 5/16" - 18 x 3/4"	30
9	140600	Outside Cover	1
10	140800	O' Ring 8 x 230mm H70	2
11	141000	Bearing 6007	1
12	142401	1st Stage Housing	1
13	142800	Thrust Washers	10
14	142900	FHCS (Brass) 6 - 32 x 3/8"	30
15	142500	1st Stage Planet Gear	2
16	142600	Bronze Bearing	2
17	142700	1st Stage Axle	2
18	143000	Bearing 6200	1
19	143203	Set Screw 6 -10 x 16mm (Dog Point)	5

Item#	Part #	Description	Qty
20	142402	1st Stage Cover	1
20-A	142402A	1st Stage Cover w/2nd Stage Pinion	1
21	141700	Dowel Pin 6 x 30mm	2
22	142404	Key	1
23	142403	2nd Stage Pinion	1
24	141300	1st Stage Ring Gear	1
25	141201	Dowel Pin	2
26	141200	Case	1
27	141400	2nd Stage Ring Gear	1
28	143200	2nd Stage Housing	1
29	143600	2nd Stage Axle	3
30	143700	Bronze Bearing	3
31	143800	2nd Stage Planet Gear	3
33	143400	Snap Ring 5000-156	1
34	143300A	2nd Stage Cover w/Spline	1
34-A	143301	Repair Spline (Fine)	1
34-B	143302	Repair Spline (Course)	1
35	141600	Inside Cover	1
36	141800	Oil Seal	1
37	141900	Bearing 1211	1
38	142000	Snap Ring 5100-215	1
39	142100	Snap Ring 3000-375	1



\* Rev Tech LC is an independent centrifuge gearbox part supplier for various OEM companies and is not affiliated with these OEM companies.